



Hilton &
Horsfall

Barley Green Mill, Barley Green, Barley

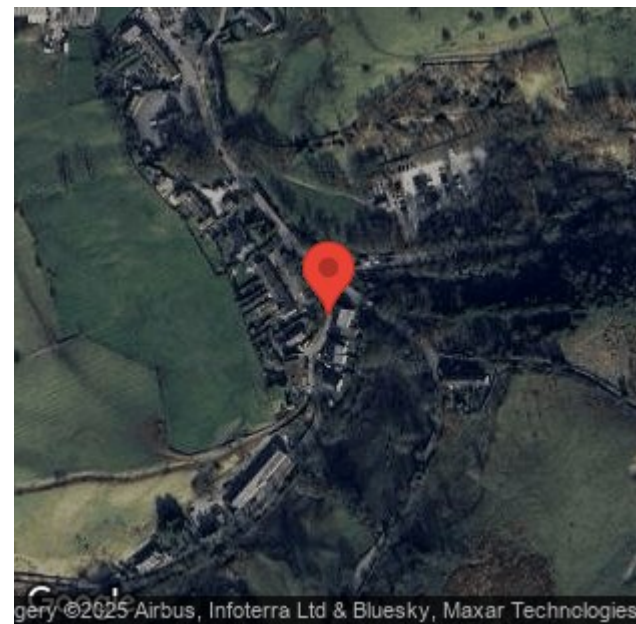
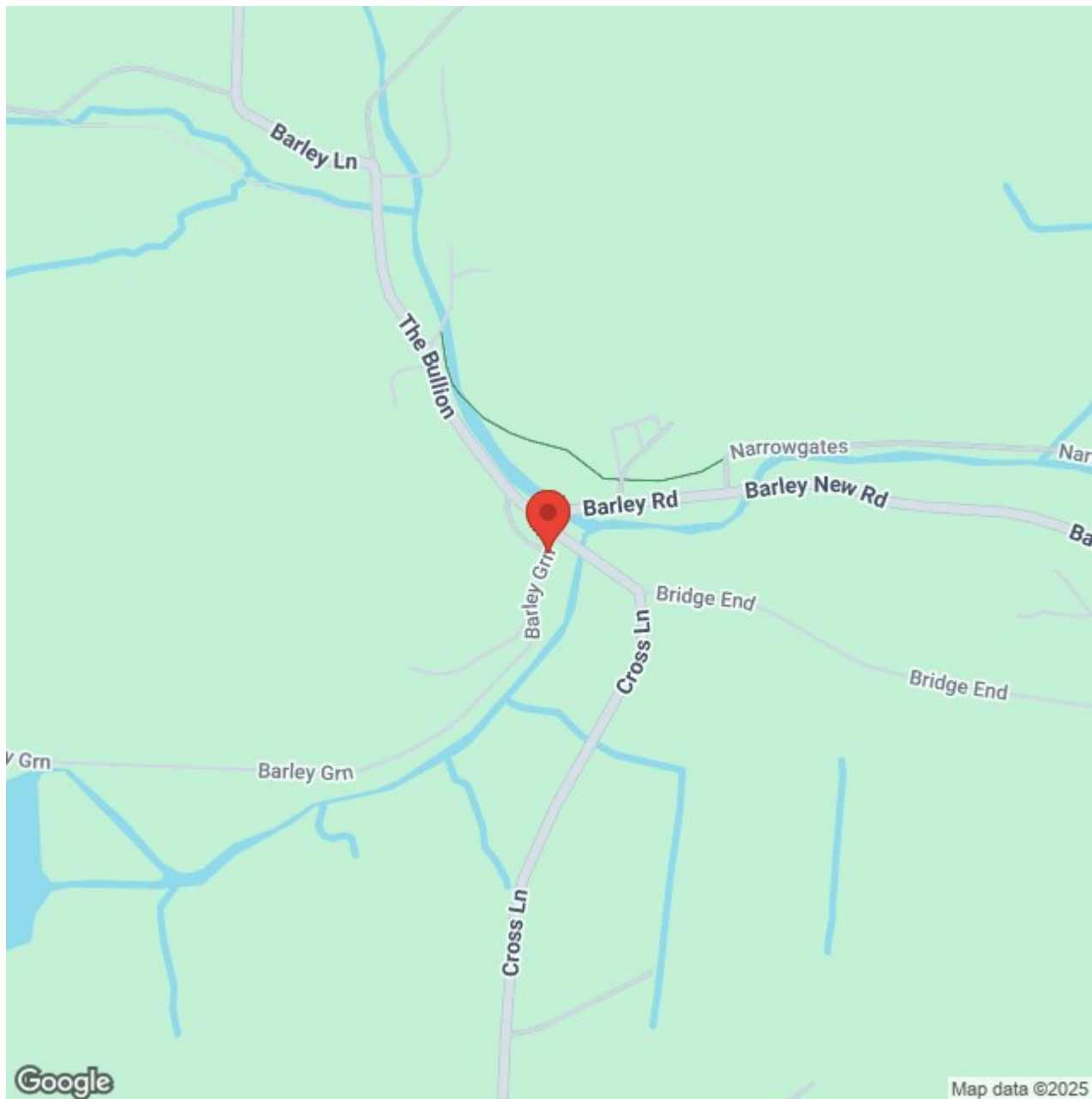
Offers In The Region Of £359,950

- Character mill conversion in sought-after Barley village
- Three bedrooms (principal bedroom with ensuite)
- Bright living room with exposed brick chimney and stove
- Stylish dining kitchen with door to the rear sun terrace
- Separate utility room and ground-floor WC
- Detached single garage (plus off-road parking)
- Low-maintenance rear courtyard/sun terrace
- Beautiful open countryside outlook and superb local walks

Set within the highly sought-after Barley Green Mill development at the foot of Pendle Hill, this beautifully presented three-bedroom home blends period character with modern living. Features such as arched mullion windows, exposed brickwork and a striking chimney breast with stove are paired with a well-planned layout that includes a bright living room, a stylish dining kitchen with direct access to the sun terrace, a separate utility room and a ground-floor WC.

Upstairs, the principal bedroom enjoys fitted wardrobes and an ensuite shower room, complemented by two further bedrooms and a modern family bathroom. Externally, the property offers a low-maintenance rear terrace, detached garage and private parking, with open greenery to the front. Located in the heart of Barley village, with its pubs, tea rooms and countryside walks on the doorstep, this is a rare opportunity to acquire a characterful home in a truly special setting.







Lancashire

Set within the highly sought-after Barley Green Mill development at the foot of Pendle Hill, this beautifully presented three-bedroom home blends period character with modern living. Features such as arched mullion windows, exposed brickwork and a striking chimney breast with stove are paired with a well-planned layout that includes a bright living room, a stylish dining kitchen with direct access to the sun terrace, a separate utility room and a ground-floor WC.

Upstairs, the principal bedroom enjoys fitted wardrobes and an ensuite shower room, complemented by two further bedrooms and a modern family bathroom. Externally, the property offers a low-maintenance rear terrace, detached garage and private parking, with open greenery to the front. Located in the heart of Barley village, with its pubs, tea rooms and countryside walks on the doorstep, this is a rare opportunity to acquire a characterful home in a truly special setting.

GROUND FLOOR

ENTRANCE HALLWAY

Welcoming hall with full-height glazed door and sidelights framing the green outlook. Flagged flooring, space to sit & de-boot, staircase to first floor, and doors to the WC and living room.

GROUND FLOOR WC / CLOAKS

Contemporary two-piece suite with wash basin and WC, finished with modern tiling.

LIVING ROOM 13'7" x 20'3" (4.15m x 6.19m)

A generous reception room with a feature exposed brick chimney breast and stone lintel housing a stove, wood-effect flooring, picture window to the front elevation and a glazed double door into the dining kitchen.

DINING KITCHEN 9'8" x 12'4" (2.95m x 3.77m)

Shaker-style cabinetry with contrasting dark worktops and stainless-steel splashback, inset sink, five-burner gas hob with hood, twin ovens and integrated appliances as

pictured. Space for a family dining table. Window and glazed door to the rear sun terrace, perfect for indoor-outdoor entertaining.

LAUNDRY ROOM 6'7" x 5'1" (2.03m x 1.56m)

Off the kitchen. Fitted units and shelving, work surface with inset sink, plumbing for laundry appliances and useful additional storage.

UNDER STAIRS STORAGE

FIRST FLOOR / LANDING

Gives access to all bedrooms and the family bathroom.

BEDROOM ONE 10'3" x 15'7" (3.14m x 4.77m)

Positioned to the front with striking arched mill windows (with shutters) and a rooflight drawing in extra daylight. Fitted wardrobes. Door to:

ENSUITE SHOWER ROOM

Smartly tiled with large shower enclosure (rainfall head and handset), pedestal wash basin, WC and heated towel rail.

BEDROOM TWO 6'11" x 12'6" (2.11m x 3.82m)

Set to the front with feature arched windows and rooflight; includes a built-in storage cupboard. Ideal child's room or generous study.

BEDROOM THREE 9'6" x 8'11" (2.92m x 2.73m)

A comfortable double to the rear with ample space for wardrobes and bedroom furniture.

BATHROOM

Modern three-piece suite comprising panelled bath with overhead rainfall shower and screen, pedestal wash basin and WC. Neutral tiling and heated towel rail.

LOCATION

Barley is a highly desirable village nestled beneath Pendle Hill, surrounded by breathtaking countryside and renowned walking routes. Everyday amenities, village pubs and tearooms are close by, with convenient links to Barrowford, Clitheroe and the wider Pendle/Ribble Valley.

360 DEGREE VIRTUAL TOUR

<https://tour.giraffe360.com/barley-green-mill>

PUBLISHING

You may download, store and use the material for your own personal use and research. You may not republish, retransmit, redistribute or otherwise make the material available to any party or make the same available on any website, online service or bulletin board of your own or of any other party or make the same available in hard copy or in any other media without the website owner's express prior written consent. The website owner's copyright must remain on all reproductions of material taken from this website. www.hilton-horsfall.co.uk

PROPERTY DETAIL

Unless stated otherwise, these details may be in a draft format subject to approval by the property's vendors. Your attention is drawn to the fact that we have been unable to confirm whether certain items included with this property are in full working order. Any prospective purchaser must satisfy themselves as to the condition of any particular item and no employee of Hilton & Horsfall has the authority to make any guarantees in any regard. The dimensions stated have been measured electronically and as such may have a margin of error, nor should they be relied upon for the purchase or placement of furnishings, floor coverings etc. Details provided within these property particulars are subject to potential errors, but have been approved by the vendor(s) and in any event, errors and omissions are excepted. These property details do not in any way, constitute any part of an offer or contract, nor should they be relied upon solely or as a statement of fact. In the event of any structural changes or developments to the property, any prospective purchaser should satisfy themselves that all appropriate approvals from Planning, Building Control etc, have been obtained and complied with.



Hilton &
Horsfall



Hilton &
Horsfall

OUTSIDE

Rear Sun Terrace

A private, low-maintenance flagged terrace with decorative screening and stone retaining wall, enjoying a lovely open aspect up the hillside — an ideal space for morning coffee or evening dining.

Parking & Garage

Detached single garage – 8'7" x 17'1" (2.63 x 5.21 m) — located within the development, together with off-road parking.

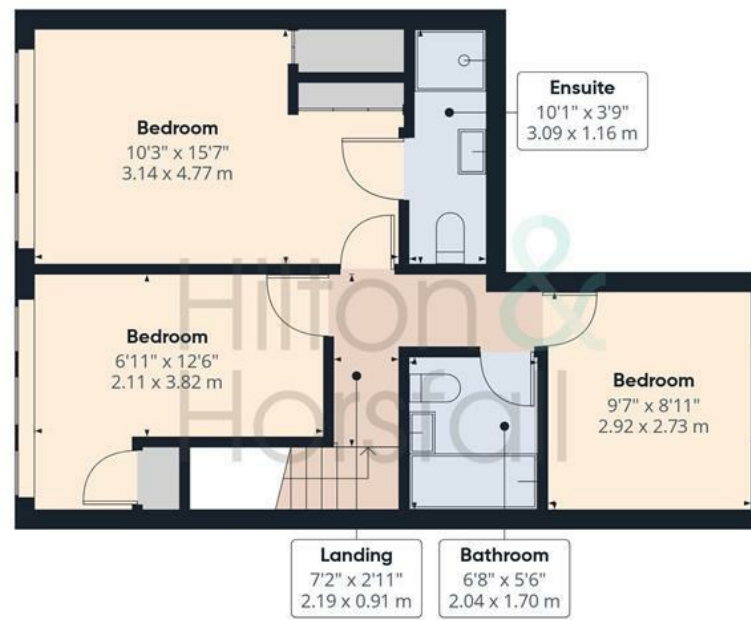
Front

Attractive stone façade with arched windows and a small railed forecourt setting the house nicely back from the lane and across from open greenery.

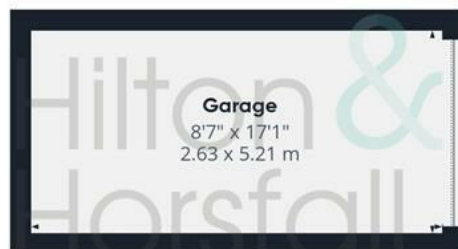




Ground Floor Building 1



Floor 1 Building 1



Ground Floor Building 2

Hilton &
Horsfall

Approximate total area⁽¹⁾

1135 ft²

105.3 m²

(1) Excluding balconies and terraces

Calculations reference the RICS IPMS 3C standard. Measurements are approximate and not to scale. This floor plan is intended for illustration only.



Hilton &
Horsfall



Hilton &
Horsfall

75 Gisburn Road
Barrowford
Lancashire
BB9 6DX

w. hilton-horsfall.co.uk
t. [01282 560024](tel:01282560024)

20 Wellgate
Clitheroe
Lancashire
BB7 2DP

w. hilton-horsfall.co.uk
t. [01200 435667](tel:01200435667)